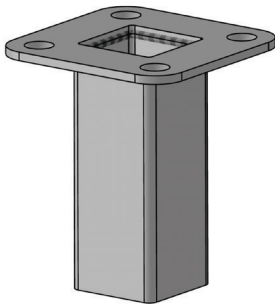




## Sub Pole Cup

---

Accessories & Hardware



COPYRIGHT 1 SOUND - ALL RIGHTS RESERVED - 2021

[www.1-sound.com](http://www.1-sound.com)

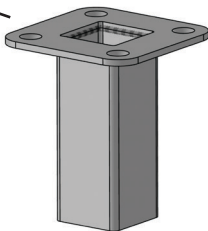
Made in USA 

## Sub Pole Cup Overview

The Sub Pole Cup is compatible with various 1 SOUND subwoofers in order to attach a speaker pole with a speaker to a subwoofer.

Special feature: this cup fits all 1 SOUND Active Speaker Tubes and standard round poles that have a M20 screw-in bolt.

[A] Sub Pole Cup

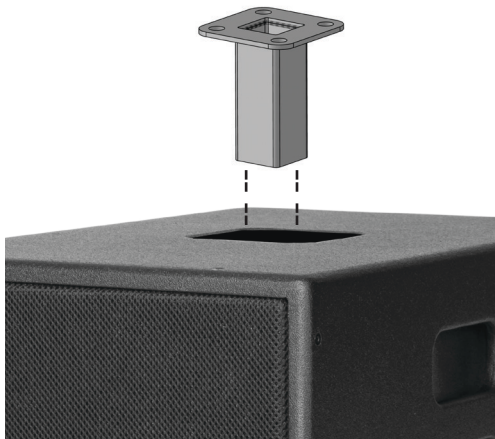


Material	4mm galvanized steel
Color/Finish	black or white

Remove the M6 x 30mm screws and the Sub Pole Cup Cover that the subwoofer comes with.



Place the Sub Pole Cup in.



Secure with the same (4) M6 screws.

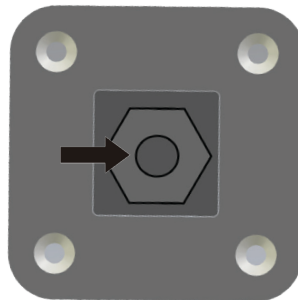


Tip: If there is resistance from insulation, it is okay to push down the Pole Cup to secure it. Do not remove any insulation.

Use the Sub Pole Cup to place in a 1 SOUND Active Tube.



Or use the Sub Pole Cup to sciew in a standard M20 round speaker pole.





1 SOUND, *Manufacturer*  
34 Apple Street  
Tinton Falls, NJ 07724

HQ: +1-732-798-9900  
sales@1-sound.com

Visit [www.1-sound.com](http://www.1-sound.com) for more product and service information.

---